

# GEDA MAXI

## Features & benefits

The GEDA MAXI 120S goods hoist is mountable at the scaffold base and provides swift hoisting at 60 m/min or 20 m/min.

With a motor drive at the bottom of the scaffolding and a lightweight swivel arm at the top, it allows easy assembly and quick relocation during construction. This makes a great choice for installing high scaffolding structures.

Versatile accessories cater to diverse construction needs.

- Two-speed winch unit of either 60 m/min or 20 m/min.
- Load capacity 120kg.
- Compact and quick to install or can be raised to higher levels.
- Height Range to 40m or 76m\*.

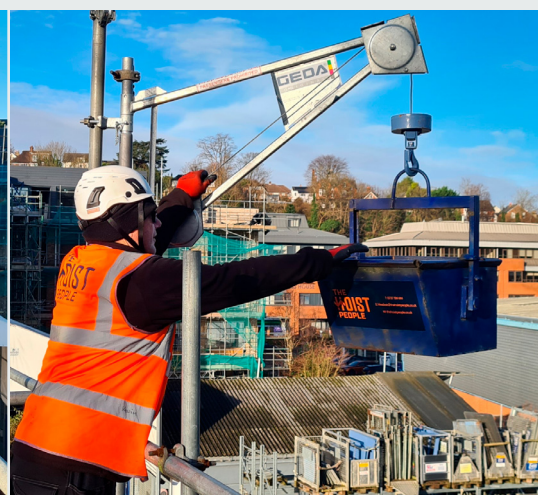
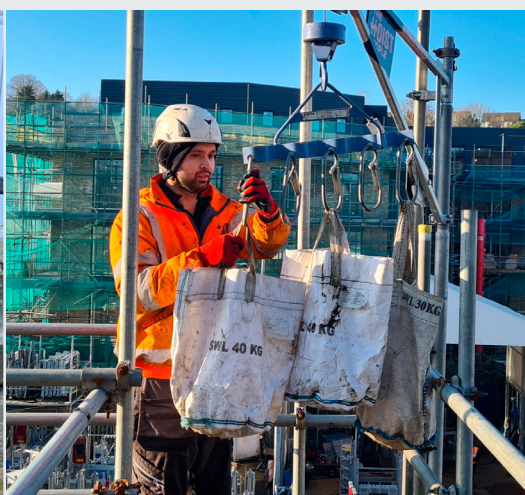
*\*Normal max height is 40m but can be increased by relocating the winch unit to a higher level.*



Two speed winch motor

Unloading using the 5-hook attachment

Unloading at the top of the scaffolding



## Accessories for the Geda MAXI

### 5 Hook attachment

Perfect for lifting scaffold bags of fittings and to lift separate scaffold poles.



### Tipping bucket

**Small 45L** - 400mm (W) x 450mm (L) x 300mm (H)

**Medium 90L** - 400mm (W) x 660mm (L) x 385mm (H)

**Large 120L** - 460mm (W) x 780mm (L) x 430mm (H)



### Slings

Lifting webbing Sling, Strops 1 tonne.

**Perfect for: rolls of felt, battens, rolls of lead, etc.**



### Materials basket

920mm (L) x 570mm (W) x 440mm (H)

**Perfect for: bricks, tiles, lead, bags of waste, etc.**



### Transformer

3.3kw / 110V / 16a – heavy duty continuous transformer (supplied by The Hoist people).



**Can be paired with our 5/6 kva generators**



## PRODUCT SPECIFICATION

# GEDA MAXI

	<b>Geda MAXI 120</b>
<b>Maximum Height</b>	40m however, can be increased to 76m by moving the winch unit up the scaffolding
<b>Lifting Capacity - Goods Mode</b>	120kg
<b>Lifting Capacity - Personnel Mode</b>	n/a
<b>Lifting Speed - Goods Mode</b>	20 m/min (slow speed) - 60 m/min (high speed)
<b>Lifting Speed - Personnel Mode</b>	n/a
<b>Power Source</b>	110v Electric
<b>Breaker Rating</b>	16a
<b>Power Requirements (Within 2m of the hoist base)</b>	Dedicated 110v 16a Commando Socket or 3.3kw / 110v / 16a - Heavy-duty continuous transformer. (supplied by The Hoist People)
<b>Start up Current (Max)</b>	16a
<b>Running Current (Max)</b>	13.2a
<b>Cage Dimensions (Internal)</b>	n/a
<b>Approx. Ground Space Required</b>	Depends on load and site requirements
<b>Approx. Minimum Access Required</b>	n/a
<b>Approx. Gate Opening Dimensions</b>	n/a