

## GEDA 1200Z/ZP

### Features & benefits

The large loading capacity of the GEDA 1200 Z/ZP transport platform allows quick and safe transport of bulky and heavy construction materials.

Various platform configurations with different load capacities and sizes offer the right solution for any area of application and any challenges at a construction site.

The hoist can either be used as materials only at 24m/min, or with the additional roof piece, it can be used to transport persons at a speed of 12m/min.

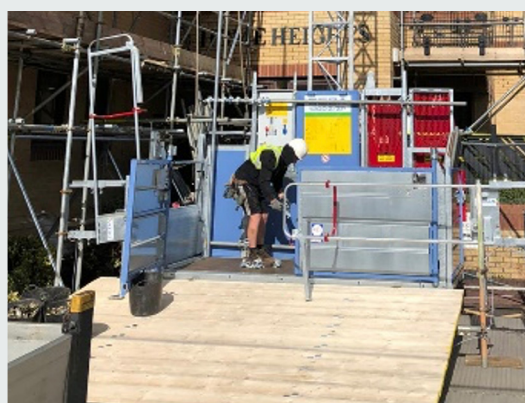
Each unit is equipped with an overload sensor and side protection rails on the unloading ramp for safety.

Key Benefits:

- 3 platform configurations.
- Up to 130m high.
- Load capacity: up to 1500kg / 7 passengers.
- Lifting speed 12 m/min passenger.
- Lifting speed 24 m/min materials.
- Electro/mechanical interlocking gates.
- Optional Load & Lock Scaffold Rack.



Double doors



Hoist at the landing position



## Power requirements



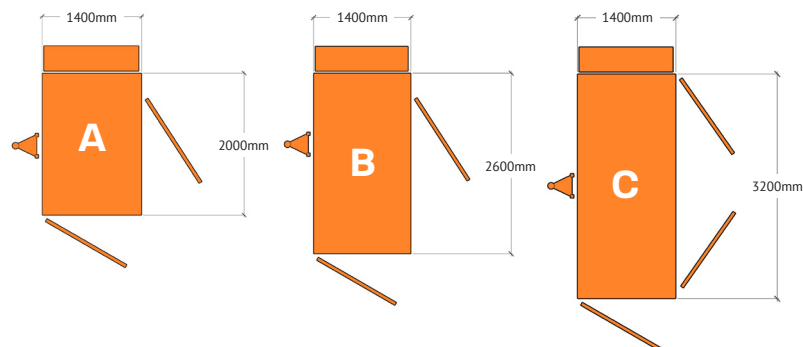
Dedicated 415v 32a Commando Socket.



32a Three Phase C Type MCB.



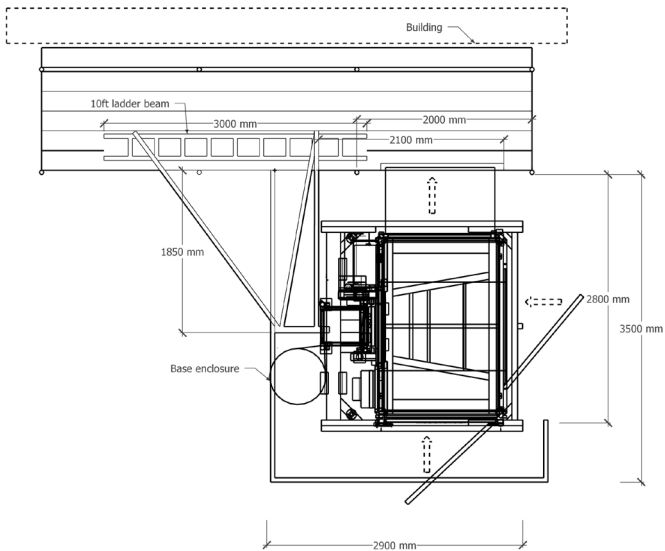
## Platform sizes available



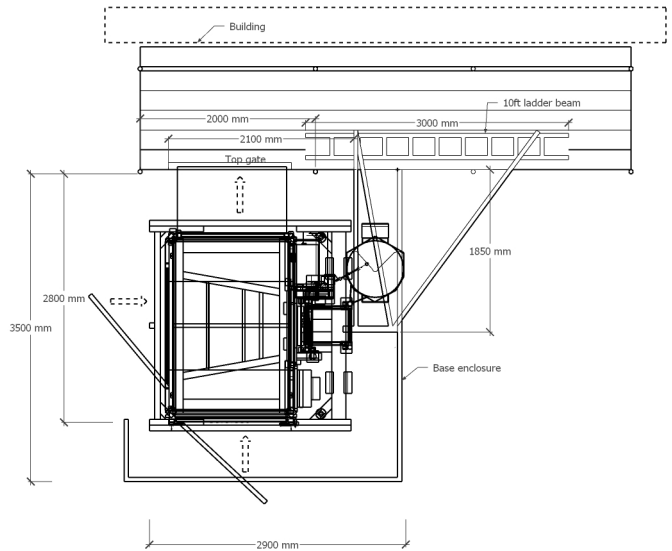
|   | 1200z/zp Type A                    | 1200z/zp Type B     | 1200z/zp Type C     | 1200z/zp Type C Fixed Length |
|---|------------------------------------|---------------------|---------------------|------------------------------|
| <b>Maximum Height</b>                                   | 130m                               | 130m                | 130m                | 130m                         |
| <b>Lifting Capacity - Goods Mode</b>                    | 1500kg                             | 1200kg              | 1000kg              | 1500kg                       |
| <b>Lifting Capacity - Personnel Mode</b>                | 7 persons                          | 7 persons           | 7 persons           | 7 persons                    |
| <b>Lifting Speed - Goods Mode</b>                       | 24 m/min                           | 24 m/min            | 24 m/min            | 24 m/min                     |
| <b>Lifting Speed - Personnel Mode</b>                   | 12 m/min                           | 12 m/min            | 12 m/min            | 12 m/min                     |
| <b>Power Source</b>                                     | 415v Electric                      | 415v Electric       | 415v Electric       | 415v Electric                |
| <b>Breaker Rating</b>                                   | 32a Three Phase C Type MCB         |                     |                     |                              |
| <b>Power Requirements</b> (Within 2m of the hoist base) | Dedicated 415v 32a Commando Socket |                     |                     |                              |
| <b>Start up Current (Max)</b>                           | 96a                                | 96a                 | 96a                 | 96a                          |
| <b>Running Current (Max)</b>                            | 17.6a                              | 17.6a               | 17.6a               | 17.6a                        |
| <b>Cage Dimensions (Internal)</b>                       | W 1400mm - L 2000mm                | W 1400mm - L 2600mm | W 1400mm - L 3200mm | W 1400mm - L 3200mm          |
| <b>Approx. Ground Space Required</b>                    | 3500mm x 3700mm                    | 4100mm x 3700mm     | 4700mm x 3700mm     | 4700mm x 3700mm              |
| <b>Approx. Minimum Access Required</b>                  | Contact us                         | Contact us          | Contact us          | Contact us                   |
| <b>Approx. Gate Opening Dimensions</b>                  | 2000mm +                           | 2000mm +            | 2000mm +            | 2000mm +                     |

**Technical information**

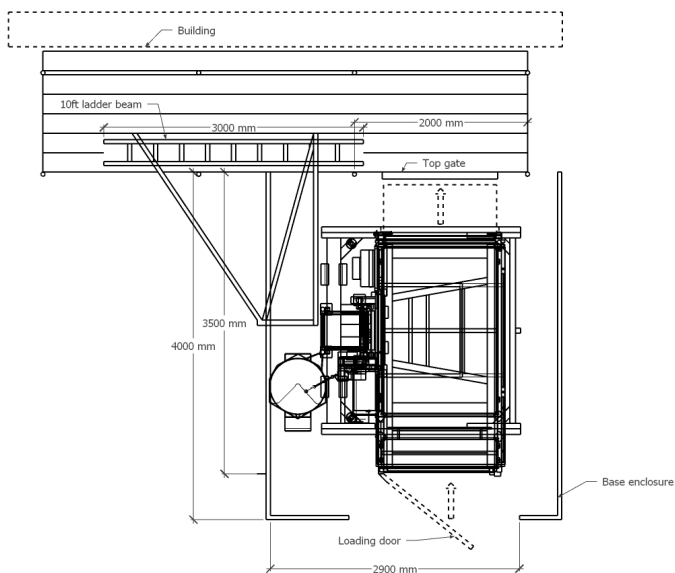
**A. Standard configuration.**



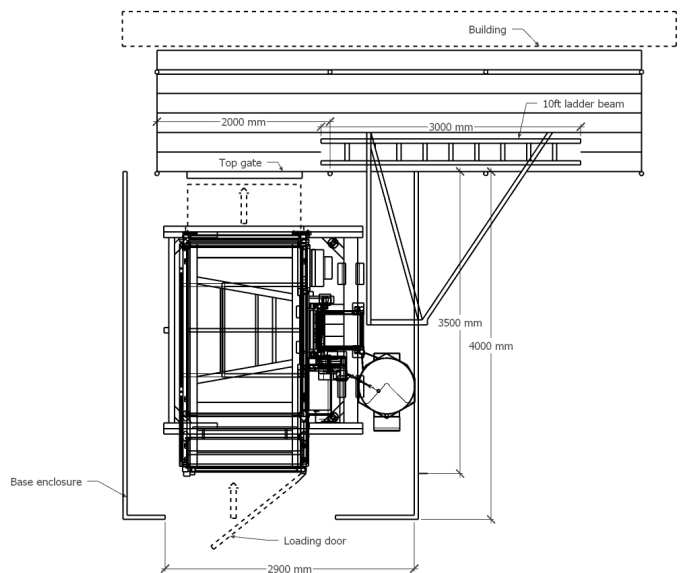
**A. Reversed configuration.**



**B. Standard configuration.**

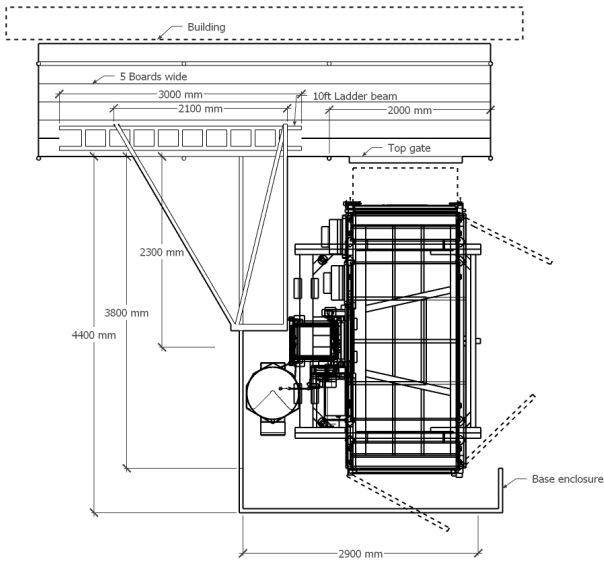


**B. Reversed configuration.**

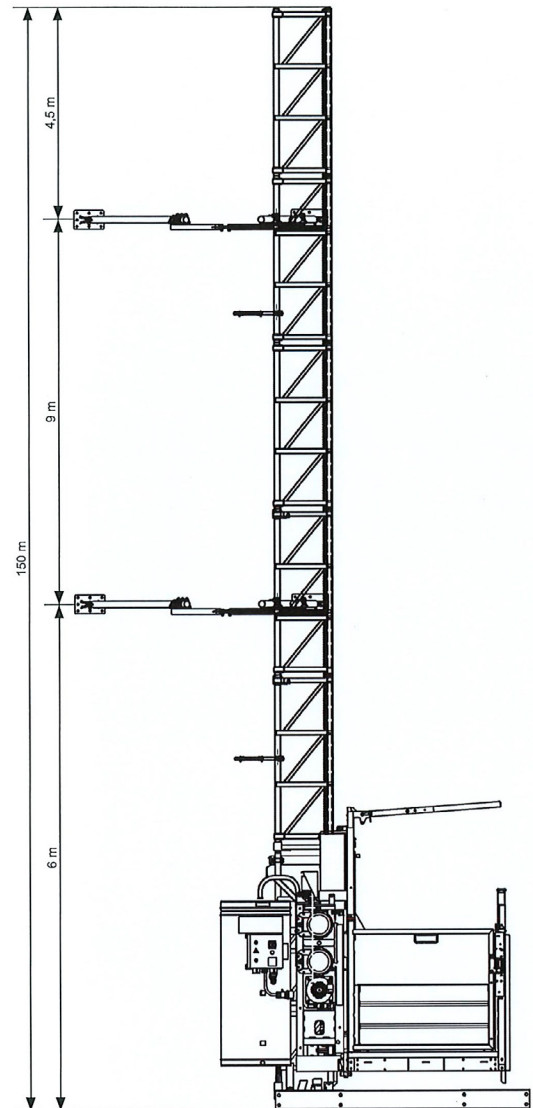


**Technical information**

**C. Standard configuration.**



Tie spacing.



**C. Reversed configuration.**

